



INSTRUCTION FOR USE

Pen Needles Plus

Product Name Pen Needles, 6mm 32G

Model Plus Pro

Specification 32G x 1/4" 0.23mm x 6mm

Product Code 04-3206

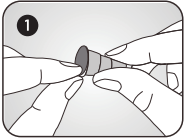
Intended Use

The pen needle is intended for use with pen injector devices for subcutaneous injection of drugs.

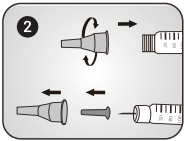
Precaution and Warning

- Consult your healthcare professional if you have any problems for use of this product.
- Select the appropriate size of needle according to the healthcare professional's suggestion.
- Please carefully read the instruction for use of the pen injector used with the pen needle.
- Do not use the pen needle if the sealing paper is damaged.
- Do not use the product beyond the use-by date.
- The pen needle is disposable single-use and please use a new needle before each injection.
- Before each injection, ensure the liquid could pass the needle tubing smoothly according to the Step 3 of use method.
- Discard the used needle into a sharps container according to the local guidelines.
- Keep it away from the children and out of their reach.
- Do not reuse the needle. Reuse may cause the needle to break, increase injection pain, and cannot guarantee the sterility of the needle.
- If you are pricked by a needle already used by others, please consult a healthcare professional promptly.
- Do not re-sterilize the needle.

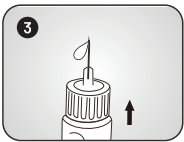
How to Use



Peel off the sealing paper.



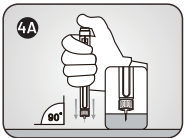
Holding the outer cap, screw horizontally the pen needle onto the pen, and then pull the outer cap straight and keep. Pull off the inner cap and throw it away.



Always check the flow of the pen needle before each injection. Refer to the procedure described in the instruction for use of the delivery device.

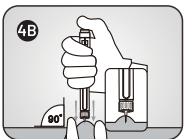
A drop of liquid should appear at the needle tip, If not, repeat until the liquid appears at the needle tip or follow the pen manufacturer's instruction of use.

Note: Liquid may fall back into the pen needle which may result in fluid being left on the skin after injection.



Set the dose prescribed by your healthcare professional following the instruction for use of the pen injector. Please consult your healthcare professional which **injection method** is most suitable for you.

4A- NO PINCH METHOD



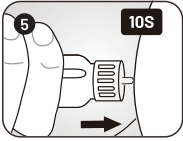
Hold the pen with one hand, in palm. Your thumb should not be on the button of the delivery device. Insert the pen needle **STRAIGHT** into the skin .

4B- PINCH METHOD

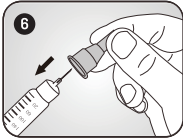
- To avoid injecting into the muscle (e.g. young children, low body fat)
- Or to ensure a firm skin surface for a successful injection.

Lift a 1 inch (2.5cm) skinfold (pinch up).

Hold the pen with one hand, in palm. Your thumb should not be on the button of the delivery device. Insert the pen needle straight into the skin.



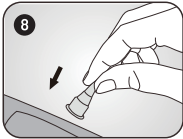
Inject your dose following the instruction for use of the pen injector. After injection, leave the needle in the skin for 10 seconds to ensure the dose accuracy.



Carefully insert the used needle back into the outer cap.



Unscrew the needle with outer cap.



Discard the used pen needle into a sharps container in accordance with the local guidelines.

Pen Needles Compatibility List

AStrazeneca:

- Byetta Pens series

Biocon:

- INSUPEN Pro™

Eli Lilly Pens:

- KwikPen®
- HumaPen® series
- Tempo Pen™
- Forteo®

Novo Nordisk Pens:

- FlexPen® series
- FlexTouch® series
- NovoPen® series
- NovoLog
- NovoRapid
- Fiasp®

Owen Mumford:

- AutoPen® series

Sanofi Pens:

- SoloStar® series
- AllStar® Pro
- JuniorStar®

Symbolic Interpretation

STERILE R

Sterilized using irradiation



Do not re-use

LOT

Batch code



Manufacturer



Date of manufacture



Consult instructions for use



Use-by date



Caution

MD

Medical Device

Not made with Natural rubber

Product Owner

Roffe International Holdings Pte Ltd
585 North Bridge Road #01-02 Raffles Hospital,
Singapore 188770
Tel: +65 6518 9959
E-mail: customercare@buzud.com
Website: <https://buzud.com>

Revised Date January 19, 2024 (Version 01)